

# SUDDEN ONSET OF SORE THROAT WHILE SLEEPING

**Luciano Zogbi**

Universidade Federal do Rio Grande (FURG), Visconde de Paranaguá Street 102, Rio Grande, RS, Brazil.

**Corresponding Author:** Luciano Zogbi, Universidade Federal do Rio Grande (FURG), Visconde de Paranaguá Street 102, Rio Grande, RS, Brazil, Zip code: 96203-900; E-mail: [zogbi@furg.br](mailto:zogbi@furg.br)

---

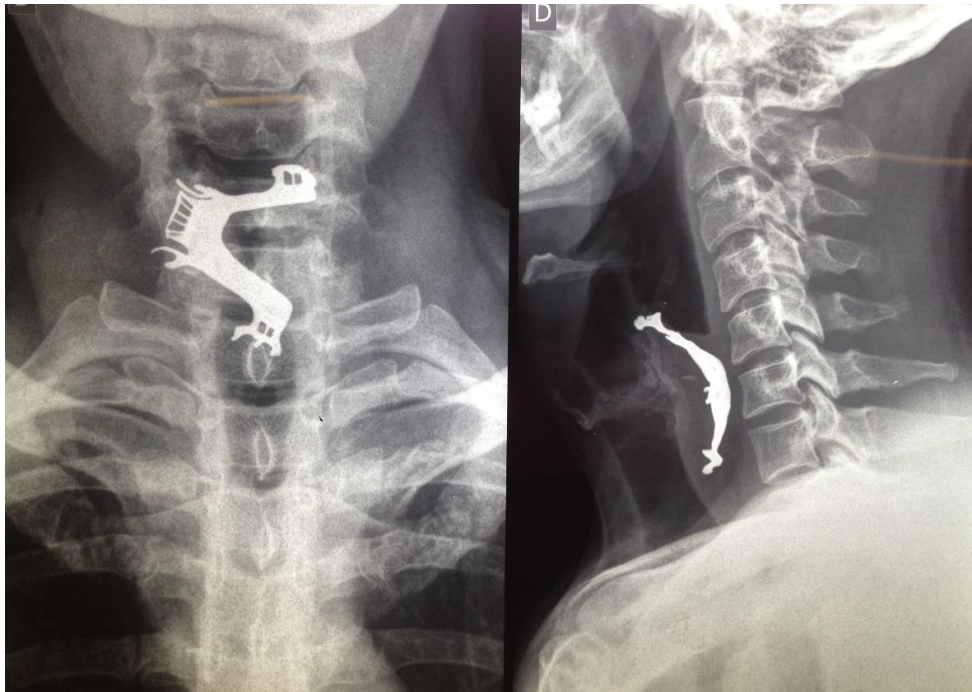
**Received:** 20 May 2018;

**Accepted:** 04 June 2018;

**Published Online:** 10 June 2018

---

A 40-year-old man presented to the emergency room with sudden onset of sore throat while sleeping, associated with dyspnea, but without air way obstruction. He denied comorbidities and use of medications. On examination, the patient was stable and the neck was unremarkable on inspection and palpation. Radiography (Figure A) revealed the presence of a dental prosthesis in the cervical esophagus just below the level of the larynx that had been swallowed during sleep. Upper endoscopy allowed immediate removal without sequelae (Figure B).



**Figure A:** Radiography revealed the presence of a dental prosthesis in the cervical esophagus.



**Figure B:** Upper endoscopy allowed immediate removal without sequelae.